

Lancer Cuadrado

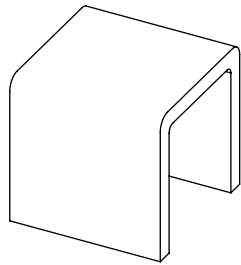
Durbanis
2008

durbanis

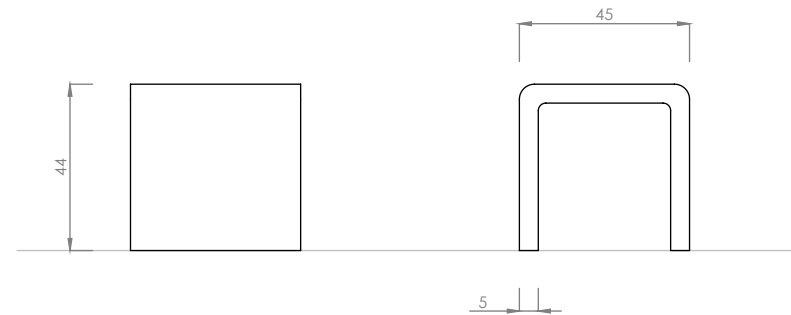
Sizes in cm

Material: UHPC concrete bench colored in mass, acid etched and waterproofed.

Weight: Lancer Cuadrado 45kg.



LANCER CUADRADO



Placement system

Handling with long polyester slings.

Supported on the ground.

All models have threaded bolts in the base, in case of needing extra fixation.

