

# Log Beton

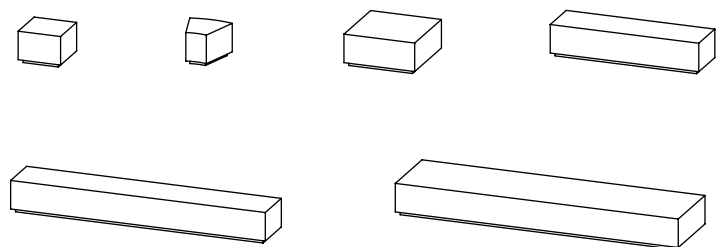
Durbanis  
2014

durbanis

Sizes in cm

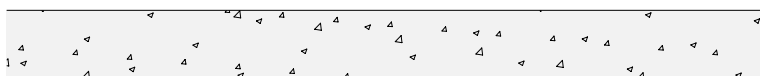
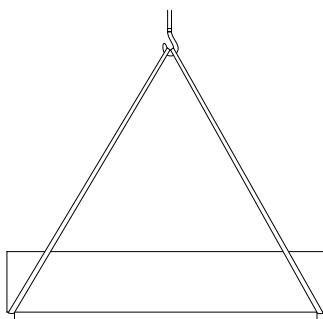
Material: Concrete bench colored in mass.

Weight: Log Beton 60, 400kg. / Log Corner, 300kg. / Log Beton 100, 700kg. /  
Log Beton 210, 1.200kg. / Log Beton 360, 2.100kg. / Log Beton 400, 3.000kg.

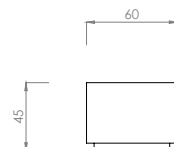


## Placement system

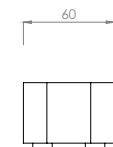
Handling with long polyester slings. The installation consists of simply supporting it on the ground. All models have M12 threaded bolts at the base, to screw M12 bars and embed them into pavement, in case of needing an extra fixation.



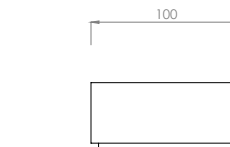
LOG BETON 60



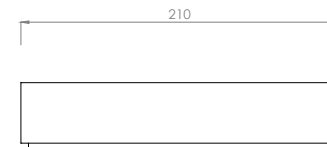
LOG CORNER



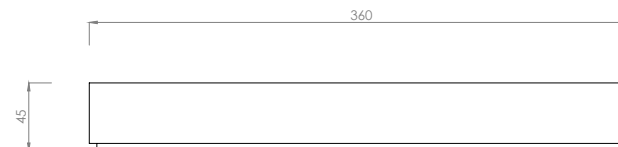
LOG BETON 100



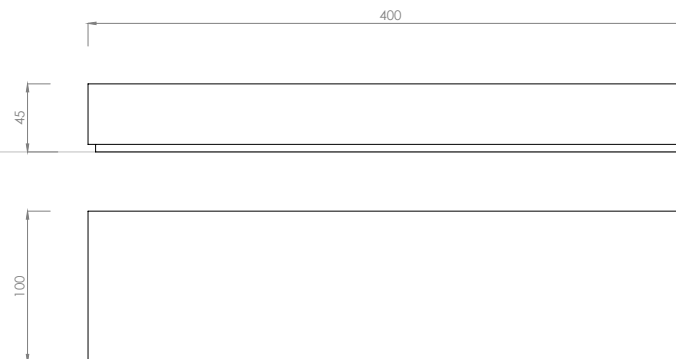
LOG BETON 210



LOG BETON 360



LOG BETON 400



# Log Beton R

Durbanis  
2025

Sizes in cm

Material: Concrete bench colored in mass.

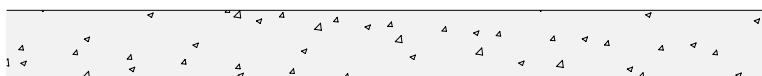
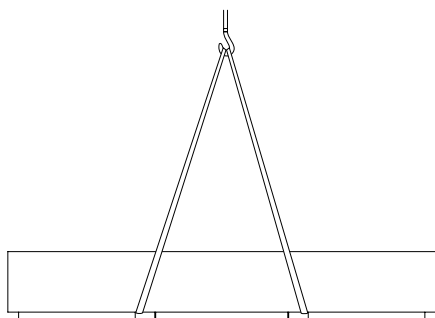
Weight: Log Beton R200, 1.700kg. / Log Beton R750, 1.600kg.

# durbanis

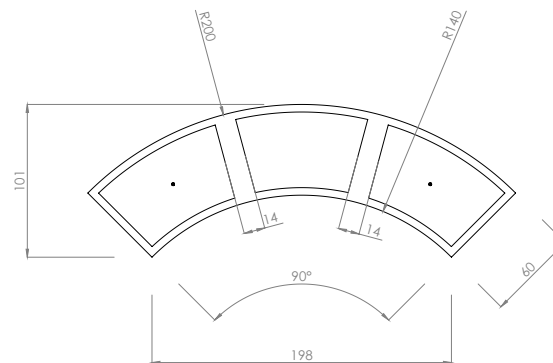


## Placement system

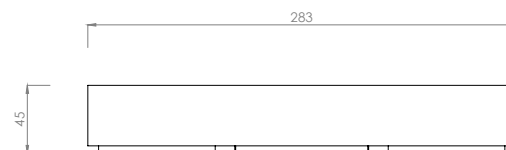
Handling with long polyester slings. The installation consists of simply supporting it on the ground. All models have M12 threaded bolts at the base, to screw M12 bars and embed them into pavement, in case of needing an extra fixation.



## LOG BETON R200

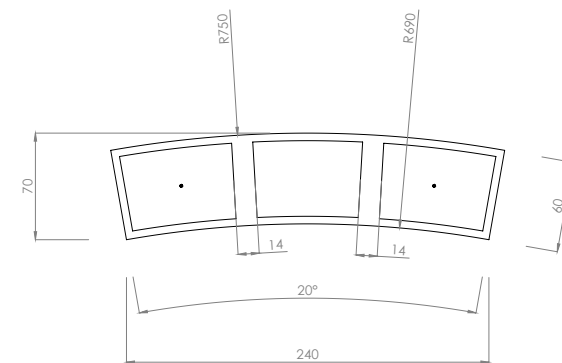


BOTTOM

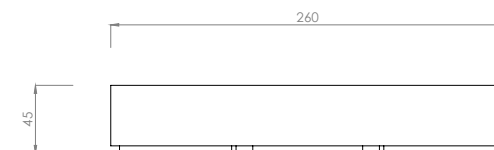


FRONT

## LOG BETON R750



BOTTOM



FRONT

## POSSIBLE CONFIGURATIONS

