



# VALENCIA Planter



Small square planter  
60 l.



Large square planter  
240 l.



Small rectangular planter  
100 l.



Large rectangular planter  
200 l.



	60L	240L	100L	200L	
	470 mm x 470 mm x 570 mm	700 mm x 700 mm x 790 mm	470 mm x 700 mm x 570 mm	470 mm x 900 mm x 790 mm	
<b>Weight</b>	<b>19,6 kg</b>	<b>39,1 kg</b>	<b>25 kg</b>	<b>37,2 kg</b>	

## ACCESSORIES AND DETAILS



Inner liner



E.g., Planter with inner liner



Adjustable foot

## EXAMPLE OF CONFIGURATION



2 small square planters + 1 large rectangular planter

## COMPATIBLE PRODUCTS "Valencia line"



Valencia bench



Valencia litter bin



Valencia ashtray

- Metallic planters which are part of the Valencia line products.
- Available in four different capacities: small square planter of 60 litres, large square planter of 240 litres, small rectangular planter
- of 100 litres and large rectangular planter of 200 litres.
- The exterior body is made of 1'5 and 2 mm galvanized steel.
- It includes a thermo-heating polyester powder coated finish.
- Feet are adjustable to the ground and in height.
- Can be fixed to the ground with 4 M8 expanding bolts (included).
- An inner liner is available as an accessory. It is made of 2 mm steel with an anticorrosive primer rich in zinc.
- The inner liner has holes on the corners to be raised and drainage holes at the bottom.
- Suitable to be used indoor and outdoor under normal weather conditions. In case of extreme weather conditions, such as high salinity, temperature or humidity, an additional special treatment can be included. Check extra cost and MOQ.



To process all your order, you must choose the corresponding model code.

## MODEL CODE

Code		Description
MPCU3010		Valencia Planter Square Small 60L
MPCU3020		Valencia Planter Square Large 240L
MPCU3030		Valencia Planter Rectangular Small 100L
MPCU3040		Valencia Planter Rectangular Large 200L

## EXTRA FINISH TO IMPROVE THE CORROSION RESISTANCE

Reference	Extra finish	Description
<b>XT</b>	*Extreme finish	Only for products made of galvanized steel. Additional treatment with anticorrosive primer rich in zinc that meets the requirements of the corrosion category C5 I, according to the rule DIN EN ISO 12944

\*Check extra cost. MOQ required.

## ACCESSORIES

Reference		Accessory	Color	Material
MPCU3011		Liner Valencia Planter Square Small 60L		Galvanized Steel
MPCU3021		Liner Valencia Planter Square Large 240L		Galvanized Steel
MPCU3031		Liner Valencia Planter Rectangular Small 100L		Galvanized Steel
MPCU3041		Liner Valencia Planter Rectangular Large 200L		Galvanized Steel

## CUSTOMIZATION

Reference		Description	Standard shape	Material
PER001		Customization V. Type 1 (100x100mm)		Vinyl
PER019		*Customization P. Type 19 (100x100mm)		Printed aluminium

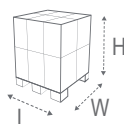
\*MOQ required.

### Example of customization



## PACKAGING AND LOGISTICS DETAILS

### Packaging details with pallet



Description	u. / pallet	Type of packaging	Pallet dimensions mm*			Pallet weight	Volume
			Length	Width	Height		
Valencia planter 60 litres (small square)	12	shrink-wrapped	1200	1000	1830	425 kg*	2,2 m <sup>3</sup>
Valencia planter 240 litres (large square)	2	shrink-wrapped	1200	800	1750	162 kg*	1,64 m <sup>3</sup>
Valencia planter 100 litres (small rectangular)	9	shrink-wrapped	1200	1000	1830	419 kg*	2,2 m <sup>3</sup>
Valencia planter 200 litres (large rectangular)	4	shrink-wrapped	1200	1000	1710	294 kg*	2,05 m <sup>3</sup>

\*Maximum weight calculated with inner liner inside the planter.

\*The logistic could be changed in case of the loading of different products in the same pallet. In case of full containers, trailers or trucks, ask for logistic optimization.



# VALENCIA Planter



Small square 60 l.

### Materials

- Body: galvanized steel
- Inner liner: steel
- Adjustable feet: Polypropylene and steel

### Weight

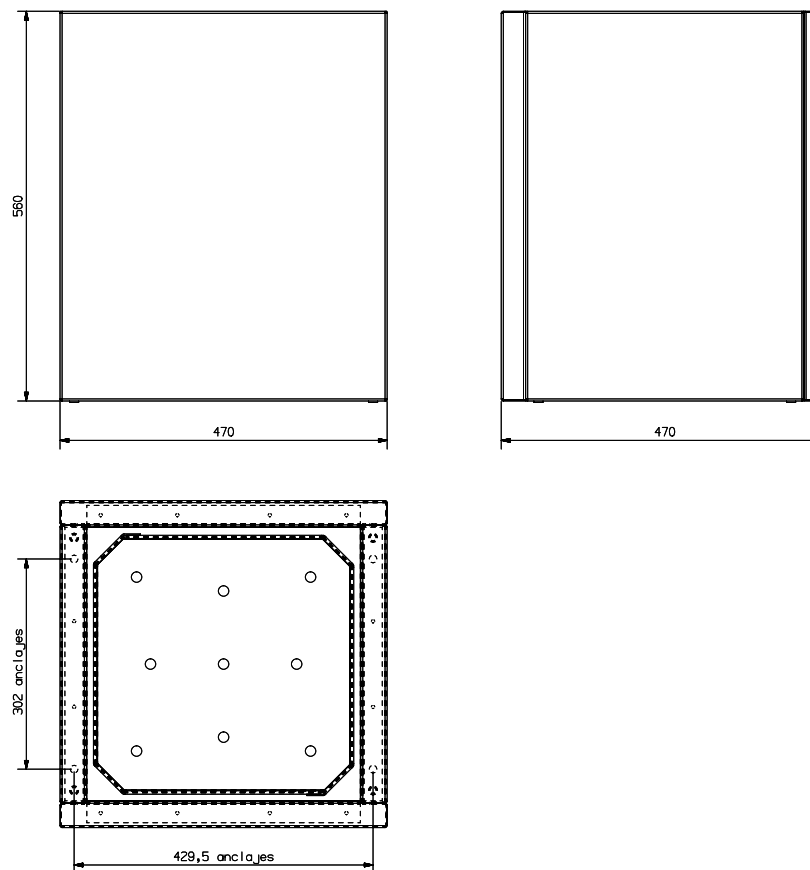
- Body: 19,6 kg
- Inner liner: 14,4 kg

### Finishes

- Body: thermo-heating polyester powder coating.
- Inner liner: special treatment with anticorrosive primer rich in zinc.

### Anchorage

- 4 M8 expanding bolts (included)





Large square 240 l.

**Materials**

- Body: galvanized steel
- Inner liner: steel
- Adjustable feet: Polypropylene and steel

**Weight**

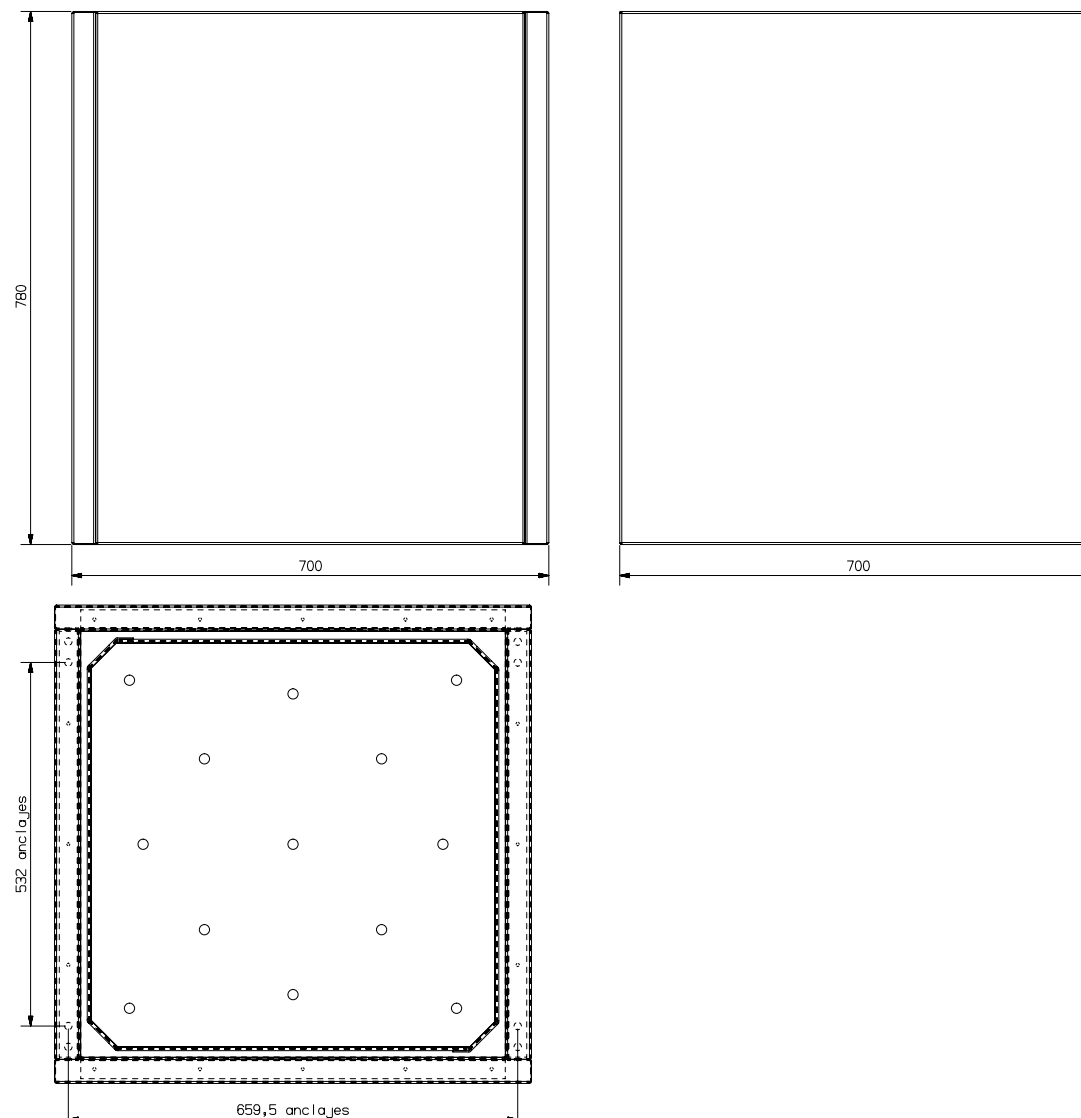
- Body: 39,1 kg
- Inner liner: 34,2 kg

**Finishes**

- Body: thermo-heating polyester powder coating.
- Inner liner: special treatment with anticorrosive primer rich in zinc.

**Anchorage**

- 4 M8 expanding bolts (included)





# VALENCIA Planter



Small rectangular 100 l.

### Materials

- Body: galvanized steel
- Inner liner: steel
- Adjustable feet: Polypropylene and steel

### Weight

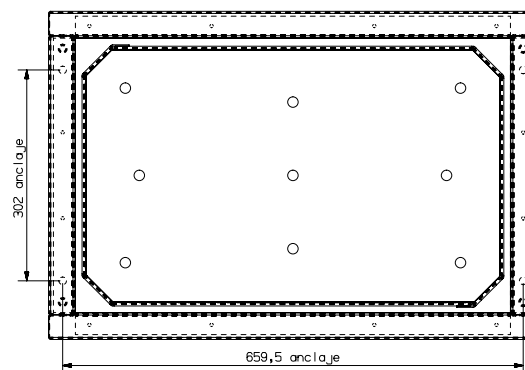
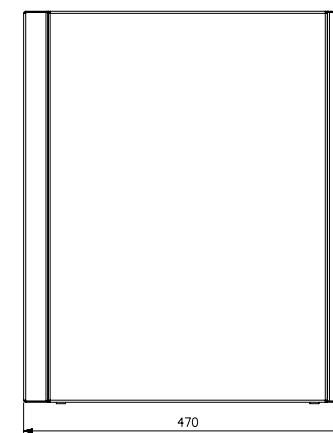
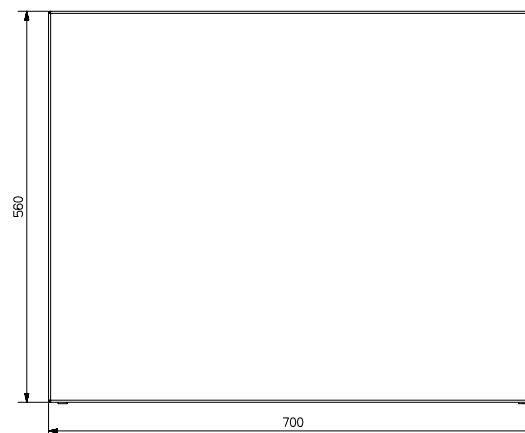
- Body: 25 kg
- Inner liner: 19,9 kg

### Finishes

- Body: thermo-heating polyester powder coating.
- Inner liner: special treatment with anticorrosive primer rich in zinc.

### Anchorage

- 4 M8 expanding bolts (included)





# VALENCIA Planter



## Large rectangular 200 l.

### Materials

- Body: galvanized steel
- Inner liner: steel
- Adjustable feet: Polypropylene and steel

### Weight

- Body: 37,2 kg
- Inner liner: 32,3 kg

### Finishes

- Body: thermo-heating polyester powder coating.
- Inner liner: special treatment with anticorrosive primer rich in zinc.

### Anchorage

- 4 M8 expanding bolts (included)

