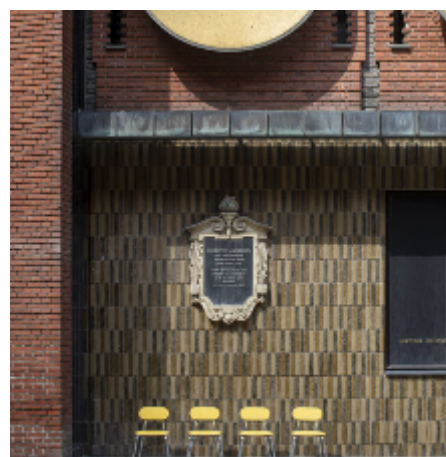
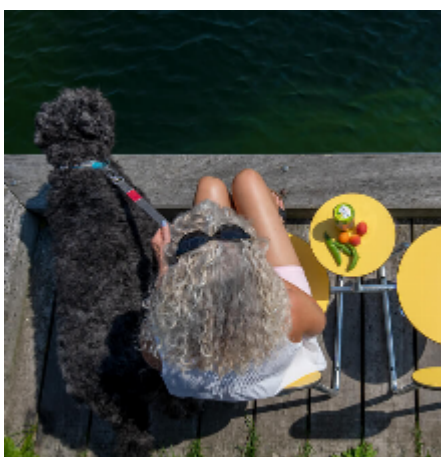
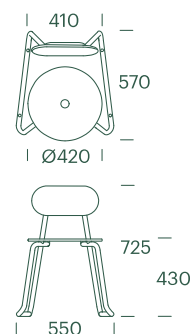


#202

Plateau City Chair

Discover unlimited flexibility with the Plateau City Chair. A chair that is suitable both for standing alone and for creating infinite formations, inviting more people to socialize in various ways in urban spaces



#202

Plateau City Chair

Technical data

Material

Seat/Backrest/Armrest/table: Robust, multilayer and coloured 12mm compact laminate (HPL) in 6 colours. Very UV and weather-resistant and solid mechanical quality and durability.

Frame: hot-dip galvanized steel pipe Ø25mm.

Disc with logo: Bead blasted stainless steel. Can be delivered with a customer-specified name/logo or other.

Sustainability

Lifespan up to 50 years.

Made from 65% surplus wood from Norwegian sawmills.

FSC® and PEFC certified.

Dimensions

H 725: B 550: D 570: S 430 mm.

Assembly + fixation

Delivered assembled. The chair can be moved or fastened via 4 x Ø14 mm holes in the frame. Gliders can also be mounted in 4 holes. Can be stacked 4 chairs in height.

Maintenance

Maintenance-free and easy to clean. Easy graffiti removal.

Variants

HPL and frame can be supplied as a variant in other colours and Disc with a different logo/name.

Family

Picnic O, I, L, Bench, Plinth, Seat, Street, Table Round, Picnic Round, Duo.

Accessories

Armrests (1 pc):

Same HPL material as seat / back and tubes in hot galvanised steel. Mounted parallel to the legs.

Side table:

Ø270mm HPL table (incl. connector) is mounted between 2 chairs and can be angled up to 30 degrees.

Connector:

A connection between 2 chairs. Hot-dip galvanized steel connector (bracket) is mounted, which can be angled up to 30 degrees.

Gliders

Set of 4 pcs. black gliders to protect the floor etc. Mounted in Ø14mm holes in legs.

Design protection

Registered EUIPO, design number 008732796-0001.

Colors (Approx. RAL)



#05 Steel blue
RAL 5024



#10 Patina Green
RAL 6000



#22 Cave
RAL 7043



#23 Corten
RAL 8011



#25 Terracotta
RAL 3016



#26 Golden Yellow
RAL 1018