

A photograph of two people sitting on concrete steps in front of a modern building with large glass windows. The scene is set at sunset, with warm golden light reflecting off the windows and creating a lens flare effect. The person on the left is wearing a bright yellow jacket, a black hat, and has visible tattoos on their arms and legs. The person on the right is wearing a colorful, multi-colored striped knit sweater and light blue jeans. The building behind them has a curved facade with large glass panels and a dark entrance. The overall mood is relaxed and urban.

CIRCUS

STAY / MEET / ACT & GO GREEN

outsider
RETHINK URBAN SPACE



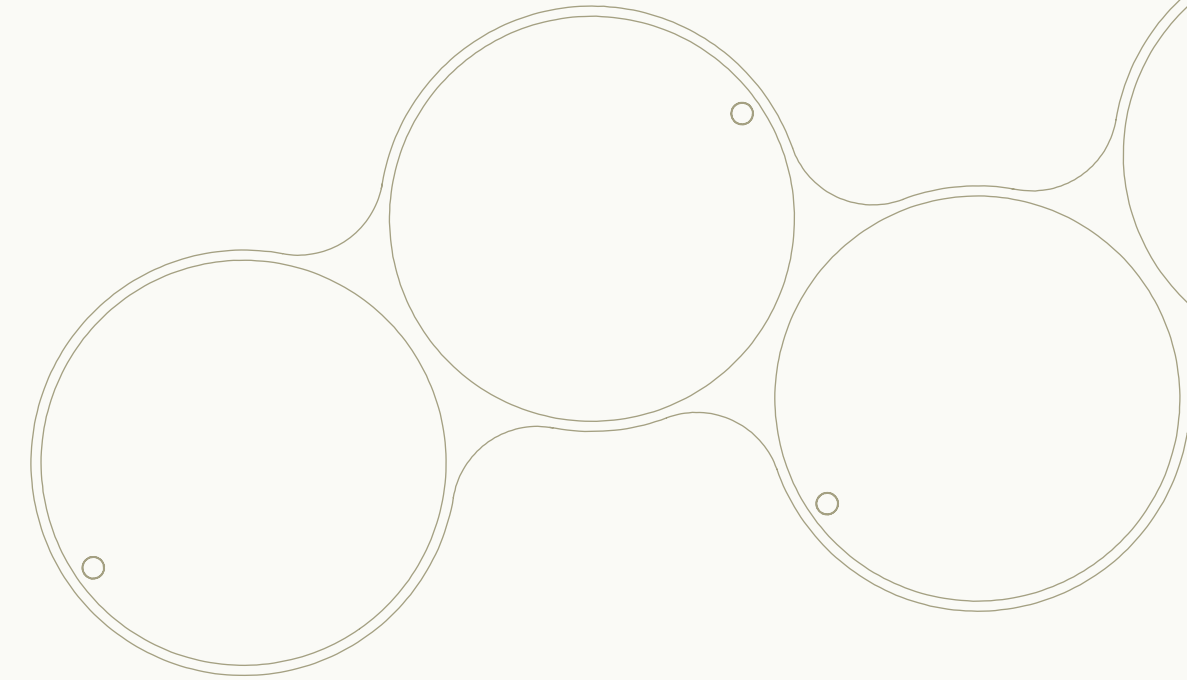
CIRCUS — THE VISION

As a child – and just as much as an adult – the Circus experience, with its arena, artists, audience and atmosphere, left a lasting impression. We see the city in the same way: a Circus full of different actors and encounters. This has inspired us to rethink urban furniture and create new ways of using public space.

Our mantra is simple: we want to encourage people to spend more time outdoors. That's why we design furniture that inspires people to step outside and engage with the city. With the Circus series, users can rotate, stack, and connect the elements to create unique configurations that invite interaction and play.

Circus is built around four key values: STAY, MEET, ACT & GO GREEN. It's about creating places where people can pause and enjoy the moment, meet across ages and backgrounds, act together in playful ways, and do so with respect for the environment.

Our hope is that, in the middle of busy urban life, Circus might spark conversations between strangers who happen to share the space. If people leave with a richer experience – even just a small one – then we have achieved something valuable.



Ib Mogensen
Founder & CEO



CIRCUS

STAY / MEET / ACT & GO GREEN



Circus is a series of urban furniture inspired by the Circus arena – a natural gathering point. It offers a dynamic, circular meeting place for everyone – regardless of age, background, or interest.

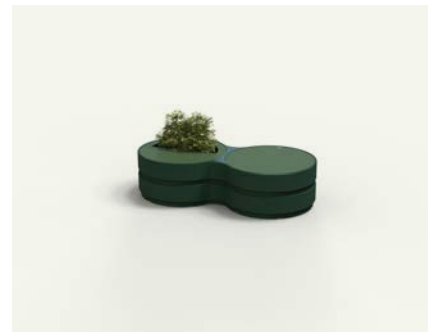
Designed to encourage social interaction, Circus brings a vibrant, sustainable, and human dimension to urban spaces. Its modularity creates opportunities to stay, meet, act, and go green in ever-changing cityscapes.



THE CIRCUS FAMILY



#213 1
Circus SOLO



#213 2
Circus DUO



#213 3
Circus TRIO



#213 4
Circus QUADRO



#213 5
Circus FORMA



#213
BUILD YOUR OWN

DESIGN CONCEPT

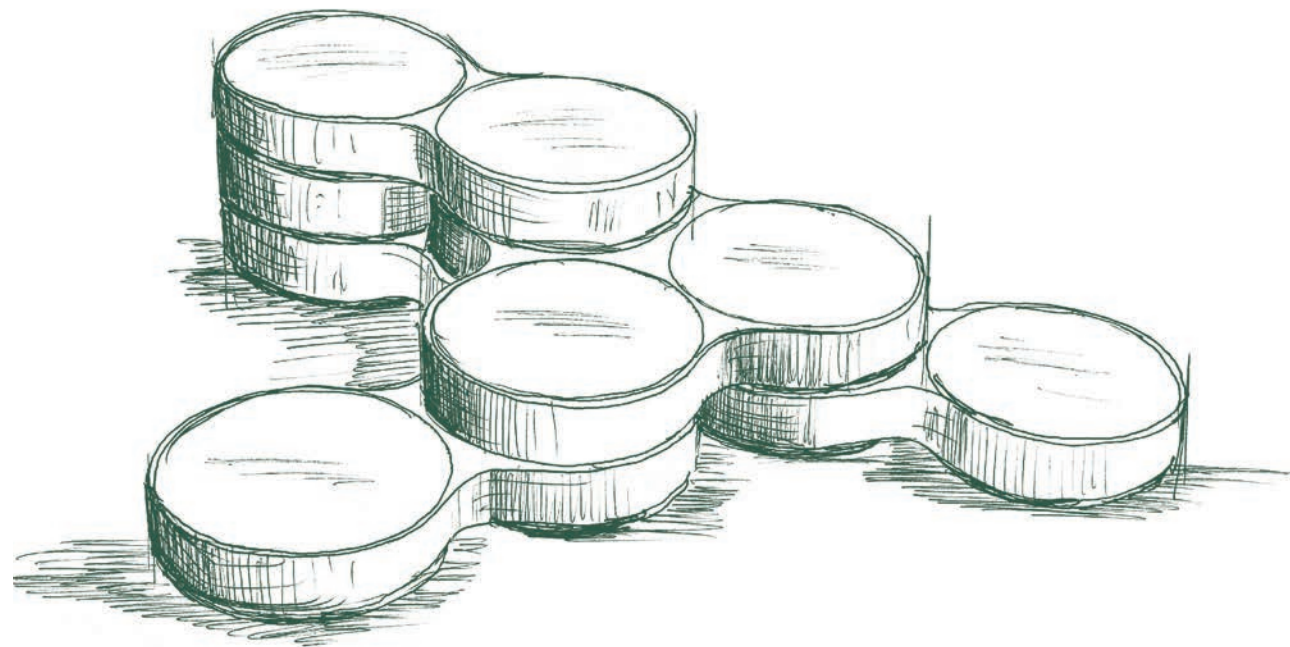
Design in three dimensions

Circus is not just modular – it is designed to be shaped in three dimensions. The system offers a flexible design language that makes it easy to configure and reconfigure public spaces with creativity and intent.

Each module allows you to:

- **Connect** elements to build long, flowing formations or broad installations.
- **Stack** modules to create multi-level plateaus and varied seating heights.
- **Rotate** bases to unlock organic, circular, or asymmetrical layouts.

This design logic makes it possible to adapt Circus to both calm resting areas, and to more dynamic, high-traffic zones – and to evolve with the needs of the space over time.



THOR HØY COPENHAGEN

Thor Høy is a Danish designer based in Copenhagen, moving effortlessly between worlds like jewelry, furniture, lighting, and industrial design. Since 2016, he has run his own design studio, creating products for both Danish and international brands.

With roots in Nordic modernism — mixed with poetry, practicality, and a playful touch — Thor Høy designs functional and aesthetically balanced pieces full of character.

Together with out-sider, Thor Høy has designed Circus, a playful reimagining of the classic bench. Inspired by the city's chaotic, lively, and colorful pulse, he has created a circular modular series that invites people to do more than just sit. Here, spontaneous encounters, play, and movement spring to life — naturally and with a sense of fun.

STAY

A space to pause, rest, and
recharge – at your own level



POLYETHYLENE (PE)

EcoMix – Recycled plastic with long life qualities

At out-sider, we are driven by the ambition to rethink materials for a more sustainable future. Since our founding in 2007, we have been on a continuous journey to develop smarter material solutions for urban furniture – combining great design and long-term functionality with a strong focus on resource efficiency and circular thinking.

For organically shaped products, we use rotational moulding – a process ideal for creating durable, long-lasting furniture suited for outdoor use. Our main material is polyethylene (PE) – known for its minimum 30-year lifespan and ability to be 100% recycled up to seven times without loss of strength or quality. To further reduce the use of fossil-based raw materials, we’ve developed a dedicated material concept: EcoMix.

This special range of plastics is made from carefully selected recycled materials – including fishing nets, used water bottles, and factory waste. With EcoMix, our goal is to increase the use of recycled content as much as possible, with a strong emphasis on post-consumer plastic.

Because household plastic waste is not yet sorted by colour, the recycled content may vary, depending on the selected colour.



EcoMix material compositions:

- **93% recycled PE – Anthracite**
Made from industrial waste. A deep grey, high-quality material with excellent durability.
- **67% recycled PE – Green**
Contains 33% recycled fishing nets and 34% post-industrial PE. A rich green tone with a unique origin.
- **33% recycled PE – Multiple colours**
Made with 33% post-consumer plastic (e.g. bottles and packaging), blended with virgin PE to allow for a broader colour palette.

COMPACT LAMINATE (HPL)



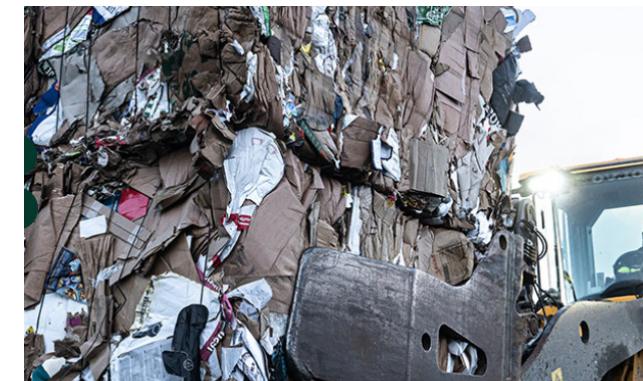
HPL stands for ‘high pressure laminate’

With sustainability in mind, our laminate panels are made from wood processed into “kraft papers”. The core of the 10mm HPL panels is made from 42 sheets of paper sourced from 100% Norwegian recycled paper/cardboard (Ranheim Paper & Boards in Norway), combined with decorative paper on the top and bottom surfaces, and bound with Austrian phenol resin.

The panels have an outdoor lifespan of approximately 50 years. Over time, the color may become slightly more matte due to sun exposure, but it will never fade.

At the end of their life cycle, the material can be cut into pieces for use as fill material or incinerated for energy recovery without releasing any harmful waste substances.

Our HPL panels comes in two surface variants, a rough surface and one with uniform surface. Regardless of what variant is chosen, HPL comes in a variety of 4 color options Both variants are pleasant to the touch – in winter it is not cold, and in summer it is not scolding hot.



MEET

A shared space – connecting people
across generations and backgrounds





CIRCUS SOLO

The courage to stand alone

STAY / ALONE / TOGETHER



Circus Solo is the simple and honest starting point of the Circus family. In its simplicity, Solo creates a quiet space for rest, reflection, and pause – right in the middle of urban life. A rounded, monolithic element that can stand alone or be part of larger configurations.

Circus Solo creates space for the individual in public settings. Its soft, rounded form is inviting from every angle, and the tactile interplay between materials adds a warm contrast to the urban landscape. Here, you can take a seat – alone or together – but never outside the sense of community.





CIRCUS DUO

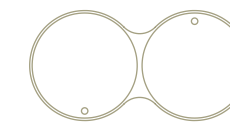
Rethinking the bench

TOGETHER /
FLOW /
REIMAGINED



Circus Duo challenges the traditional bench as we know it – often stretched out in a long, straight line. Instead, Duo introduces a soft, organic form, where two seats are connected in a dynamic structure that invites new ways of meeting and spending time in public spaces.

A small piece of furniture with a big impact – Circus Duo brings movement, variety, and nature into the urban landscape.



CIRCUS TRIO

Three levels – playful ways to gather

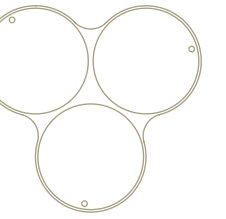


Circus Trio brings new life and movement into urban spaces through three circular modules at different heights. The sculptural form breaks away from the flat and linear – creating a playful, flexible structure that serves as a social meeting point.

The three levels invites you to sit high, low or somewhere in between. The combination of function and form makes Trio a natural gathering spot in everything from schoolyards to plazas and parks.



LEVELS / INTERACTION / ENERGY



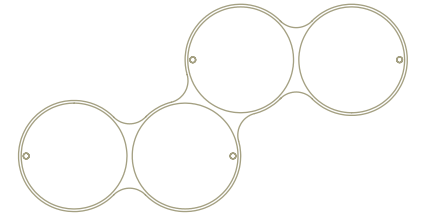


CIRCUS QUADRO

Sit your way – solo or side by side

CONNECTION / VARIATION / SHARED SPACE /

Circus Quadro provides space for multiple users at once and invites both social interaction and small, individual moments of pause. Its open, varied structure breaks away from the classic bench format, bringing greater flexibility, variation, and visual lightness to the urban space.

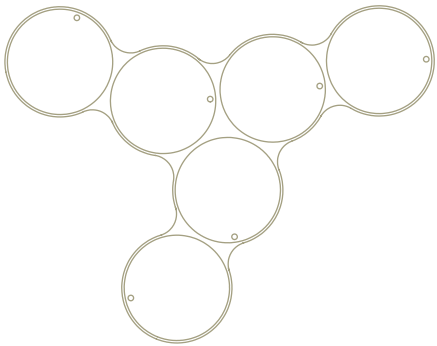




CIRCUS FORMA

From seat to stage – urban design in motion

PLAYFUL / GATHERING / URBAN LEVELS



Circus Forma is a spatial and playful formation that rises in height – from low seating surfaces to elevated levels. Its dynamic, sculptural shape invites informal gatherings, play, and amphitheatre-like moments in public spaces.

The varying heights introduce rhythm and flexibility, allowing users to engage with the structure in different ways. The central element also doubles as a natural table surface in relation to the lower seating levels, enhancing its multifunctional use.



DESIGN YOUR OWN CONFIGURATION



Circus is a modular system that lets you shape solutions tailored to your project.

Circus gives you full freedom to design flexible and functional seating zones in urban spaces. The series consists of three base modules – Base 1, 2, and 3 – each with its own distinct geometric shape, allowing for endless combinations.

The bases are available in five standard colours, which can be mixed or repeated to create either visual harmony or contrast.

Each module can be topped with a seat, a planter, or a half seat/half planter, depending on the intended use and atmosphere. Tops are available in four HPL colours or a warm mahogany version in FSC-certified wood.

Arrange the modules in straight lines, curves, or as stand-alone elements. With Circus, you can create spaces that invite people to stay, meet, act & go green – tailored to any scale or setting.



CONNECT / STACK / ROTATE



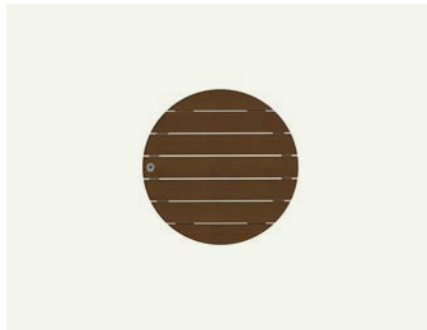
SEAT



PLANTER & SEAT



PLANTER



WOOD SEAT



BASE 1



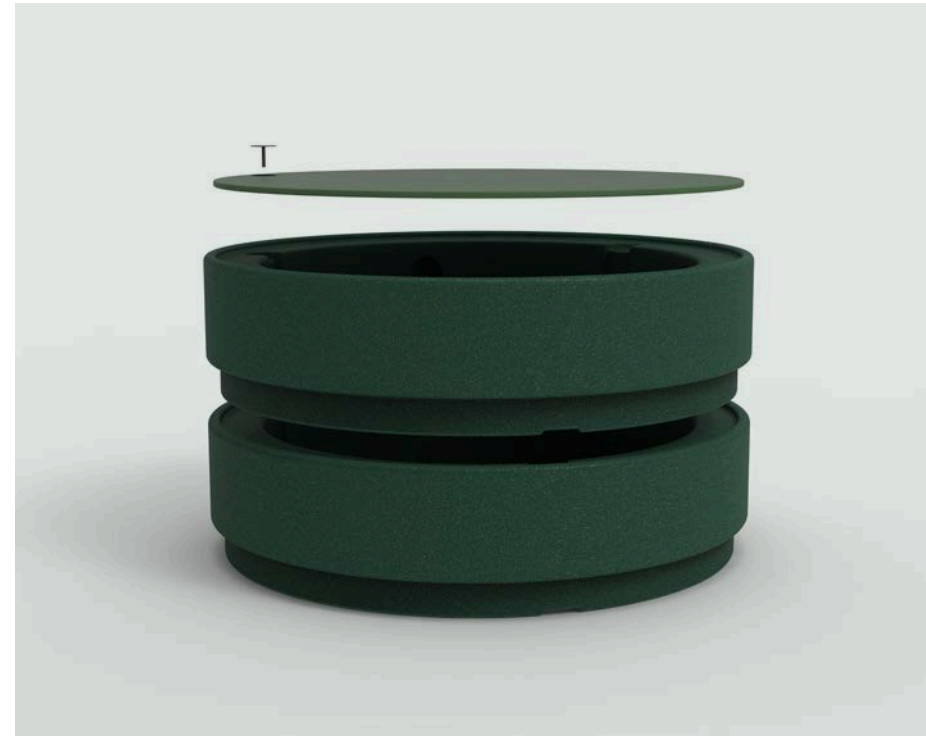
BASE 2



BASE 3



FLEXIBLE INSTALLATION



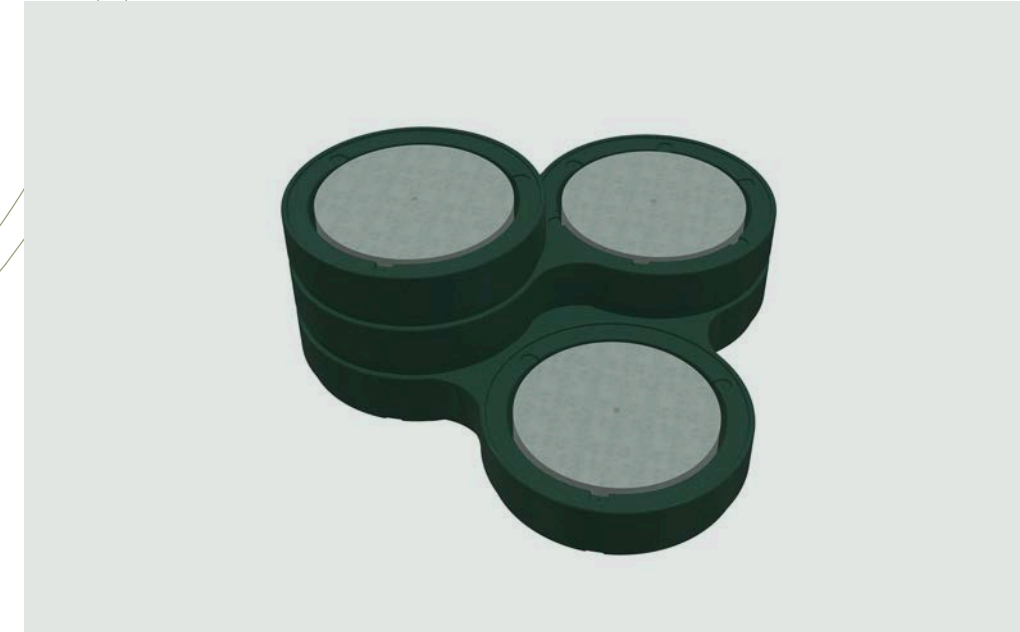
Circus is designed for easy installation and long-term durability. The modules can be fixated (mounted) in two ways: surface fixation or ground fixation. If ground anchoring is not required or possible, Circus modules can be filled internally with water or sand to achieve the necessary weight (stability).

Top mounting

All Circus tops (elements) are securely fixed to the base using a three-point fastening system.

- Seat tops (modules) are mounted with two concealed magnets (attached to a metal plate) and one central disc with an M6 thread.
- Planters and planter-seat combinations are mounted using two discreet brackets and one disc with M6 thread.

The central mounting disc is equipped with two “pignose” holes for easy installation using a standard 30 mm spanner key – the same type used for angle grinders.



Base with concrete block

With a minimum weight of 122 kg per block, this method not only ensures stable installation without ground anchoring, but also adds a bollard-like function, preventing unwanted movement or misuse in public spaces.

In combination with water ballast or multiple modules, the total weight increases significantly, making Circus ideal for high-traffic areas where safety and flexibility go hand in hand.

Example: 6 concrete blocks corresponds to a Trio + water = total weight of 912 kg.

Each module has an integrated fill opening for easy on-site handling:

- When filled with water, the total weight of a base 1 reaches approx 38 kg. (including the module).

This solution is ideal for temporary setups, flexible layouts, or locations where permanent installation is not an option.

ACT

move, play, and explore
– a playful zone in the city



GO GREEN



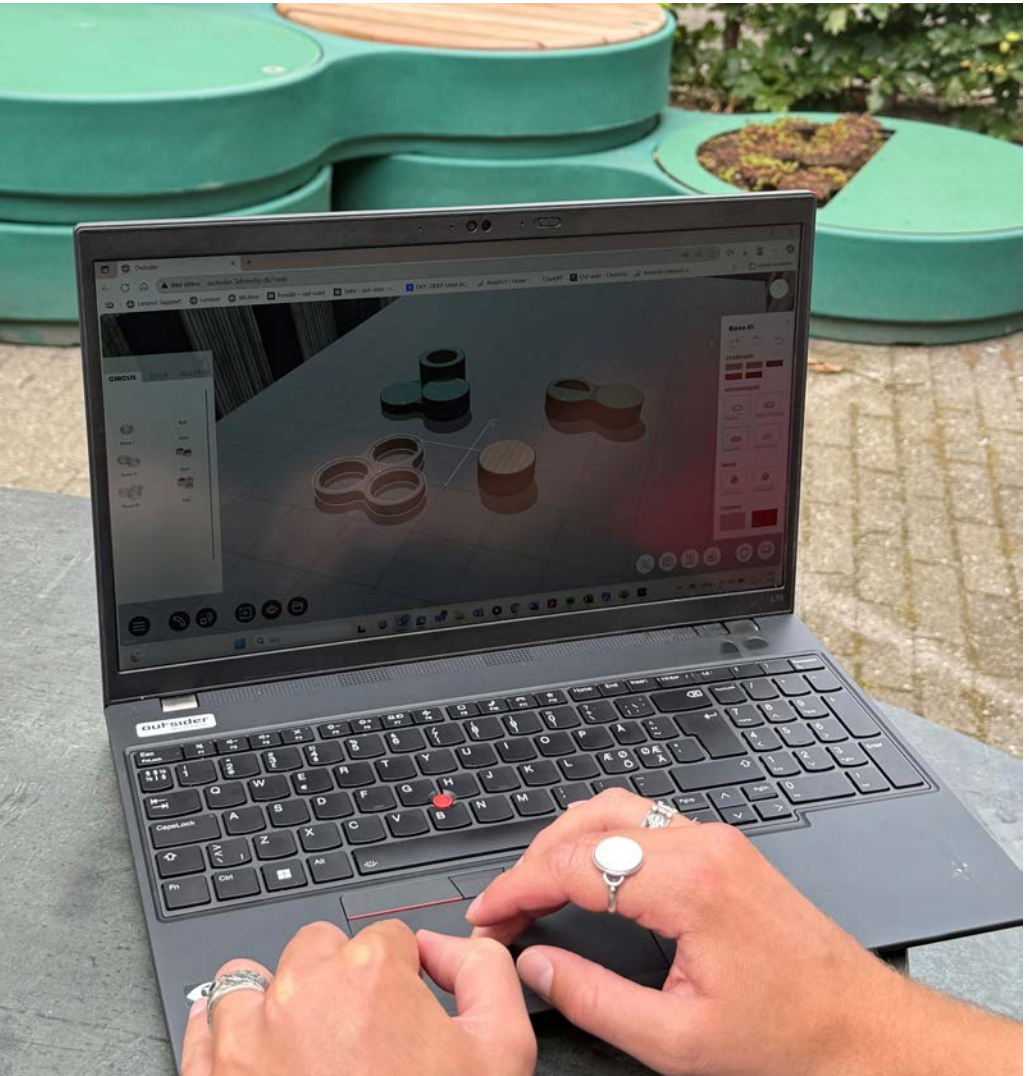
Go green expresses a dual focus on material responsibility and ecological value.

Circus is made from recycled plastic and recycled paper – contributing to circular resource use while ensuring durability and long-term functionality in outdoor environments.

In addition, selected Circus modules include space for planting trees, shrubs, flowers, or grasses, enabling the creation of small green pockets throughout the urban landscape. These planted zones can develop into microhabitats, attracting insects, pollinators, and other urban wildlife.

In this way, Circus supports both CO₂ uptake and a more diverse, resilient urban ecosystem – proving that thoughtful design can make room for both people and nature.

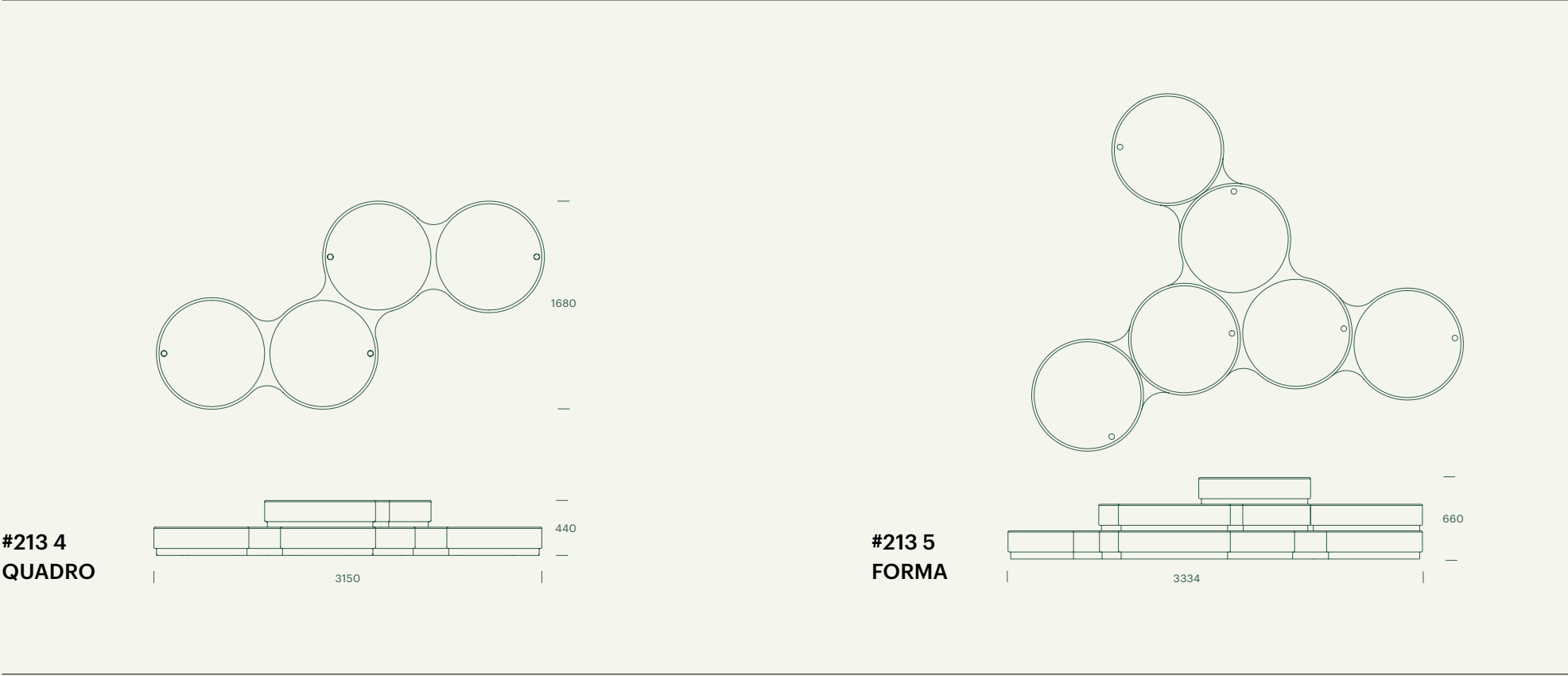
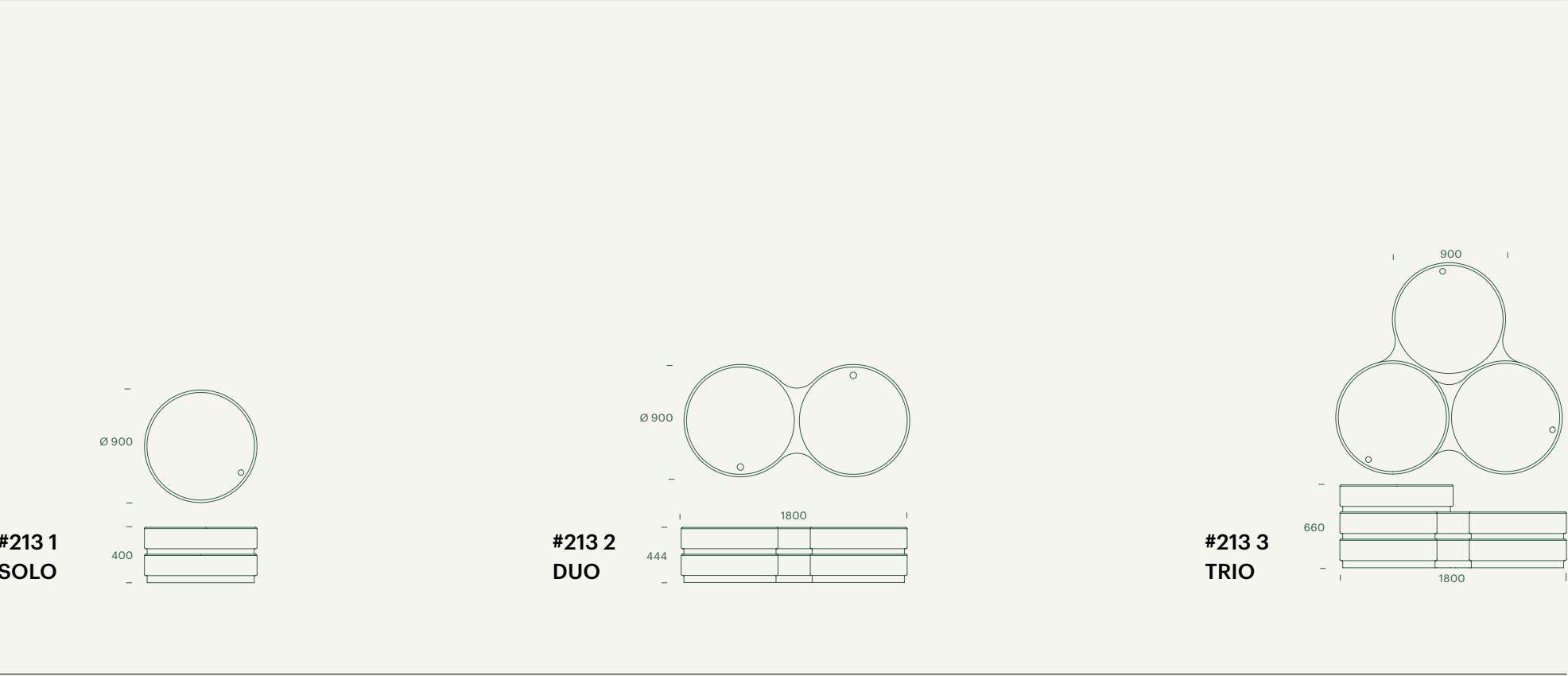
VIZU



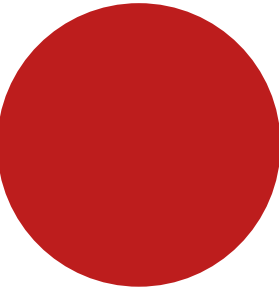
ViZU – an easy and quick IT-tool to configurate and render your own set-up Circus in your project.

DIMENSIONS

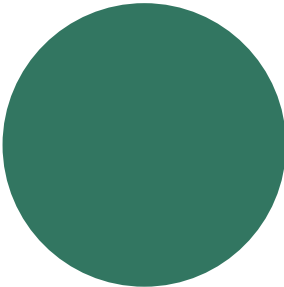
Download 2D + 3D drawings at out-sider.dk/en



COLORS TOP



#11
Red
Ral 3000



#10
Green
Ral 6032



#22
Cave
Ral 7043



#23
Corten
Ral 8011

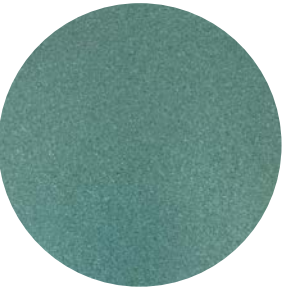


#00
Mahogany
Wood

COLORS BASE



#21
Red EcoMix
Ral 3020



#22
Green EcoMix
Ral 6033



#23
Anthracite EcoMix
Ral 9004



#30
Granite EcoMix
Ral 9038



#31
Sand EcoMix
Ral 1019

GO GREEN

Nature into the city and
recycled materials

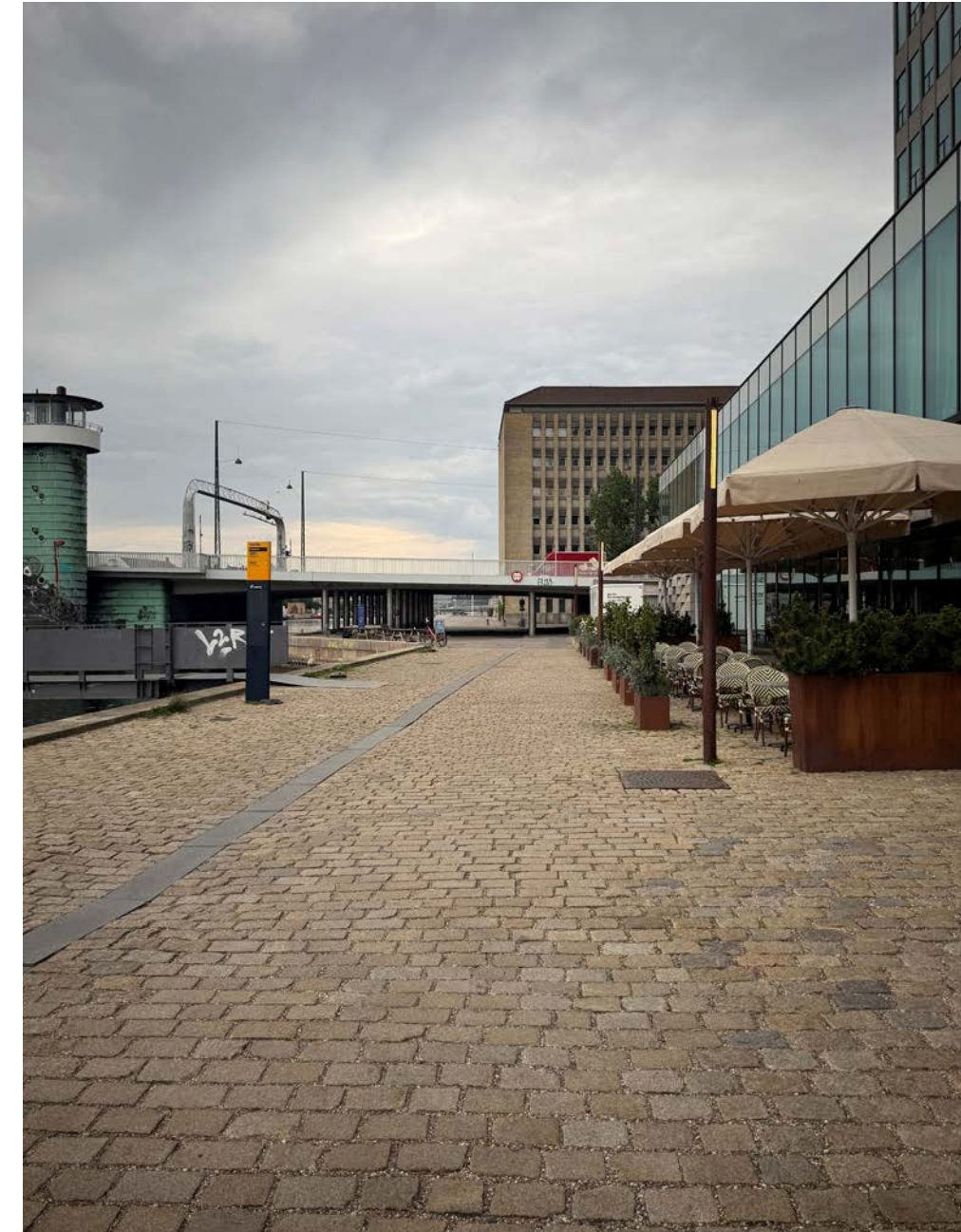


RETHINK FOR URBAN SPACE

Circus is designed to create space for social interaction – whether placed in the heart of a busy square, along a scenic waterfront, or at a buzzing schoolyard.

Designed for urban life, its soft shapes and modularity allow it to blend seamlessly into diverse settings, while its sculptural expression makes it a visual landmark.

Circus is not just a bench – it's a social sculpture that invites people to stay, meet, act & go green.



Want to know more?

Follow our journey as we rethink urban space through innovation and sustainability.

Get updates on new designs, projects, and green initiatives by joining us on:



out-sider a/s
Kígkurren 8A
2300 Copenhagen S
Denmark

+45 77 343 341
sales@out-sider.dk
www.out-sider.dk

out-sider

DENMARK

out-sider a/s
www.out-sider.dk
HITSA A/S
www.hitsa.dk

SWEDEN

HITSA AB
www.hitsa.se

NORWAY

Wesp as
www.wesp.no
Moovement AS
www.moovement.no

FINLAND

Vitreo Oy
www.vitreo.fi

THE NETHERLANDS

Tjinco bv
www.tjinco.nl

BELGIUM & LUXEMBOURG

PANACHE B.V.B.A
www.panache-sstraatmeubilair.be

FRANCE

Concept Urbain
www.concepturbain.com

SWITZERLAND

GTSM Magglingen AG
www.gtsm.ch

GERMANY & AUSTRIA

UNION - FreiraumMobiliar
Eisen-Jäger Kiel GmbH
www.union-freiraum.de

UK & IRELAND

Bailey Street Furniture Group Ltd
www.bsfg.co.uk

SLOVENIA

CONA PLUS D.O.O
www.conaplus.si

CZECH REPUBLIC, HUNGARY, ROMANIA, SLOVAKIA, POLAND

mmcité a.s.
www.mmcite.com

USA

mmcité 7 LLC
www.mmcite.com

UAE

axendo
www.axendo.me



For a complete overview
of our distributors –
please visit out-sider.dk/en
or scan the QR code